



ASSESS, INTERVENE, REFER + SERVICES

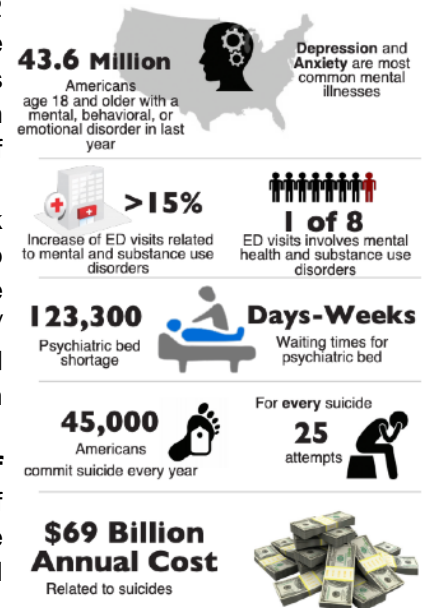
On a foundation of FDA grade, infectious disease control standards, military level security, EMR integrated, Communication & Information Theory Empowered (CITE) interfaces and over a decade of development, the Althing District Health Service is the only scalable, effective and available solution for addressing mental health, addiction, risky behavior and safety for the entire student body that is available to you now.

Universal Screening for Substance Use and Depression (age 12 and older)

Screening: Annual screening of all students beginning age 12 utilizing the evidence based CRAFFT screening tool for the identification of substance use, the PHQ-9(A) modified for adolescents to identify risk for depression and a quitting tobacco module. Based on identified risk level, reinforcement of positive behavior, brief intervention or referral to treatment is initiated.

Brief Intervention: For students showing minimal to medium risk use, Phrazier/Kitsune provides brief intervention to the student to increase awareness and enhance motivation toward behavior change and change readiness. If high risk use of substances or depression/suicide is identified, the CITE Solutions offers further assessments and brief intervention utilizing virtual engagements with mental health professionals.

Referral to Treatment (severe substance use/high risk of depression/suicide): If severe use of substances or high risk of depression/suicide is identified, Phrazier/Kitsune will provide immediate intervention for students and parents while also offering a virtual engagement with mental health professionals for a referral to treatment.



Realtime Provider Oversight, Involvement and Engagement For All

Assessment Providers: During the assessment clinical health professionals are actively engaged with each student's input. Medical staff sees, evaluates and responds to student input in realtime.

Intervention with Providers: As specific student responses trigger flags for further evaluation the Althing medical providers begin making determinations of whether or not, and if so, how a proper intervention shall be applied. These realtime interventions typically include directing a specific CITE engagement via Phrazier/Kitsune (directly to the student), a quick chat with further diagnostic inquiry, a face-to-face video meet or directing the student to the onsite staff for further evaluation.

Refer and Service: Onsite, medical professionals provide further Intervention and where needed a qualified referral. Althing Clinic and its partners may also take overflow referrals.